

Universal Control Quiet Curtain Motor Manual



Features

- AC100-240V, wide voltage input for different voltage power area
- Light touch to start the motor by softly drag the curtain fabric, it will open or close the curtain automatically
- When the electricity off, it can be manually operated
- Soft start and soft stop, quiet and smooth running
- It takes the first open and close position as its stops, and keeps the small gaps of the pulleys and pulley and gearboxes to protect the parts clash.
- Various control way for application requirements

- **Flexible quiet design:** high-precision drive, leading intelligent design, beside, slow open and close make it light and smooth moving
- **Various control:** According to the application, with option of RF control, hard wire, RS232/485 bus line control etc
- **Remember limits:** Motor remember the first open and close stop, and keep no hit on the parts for longer life usage, even the power off and on again

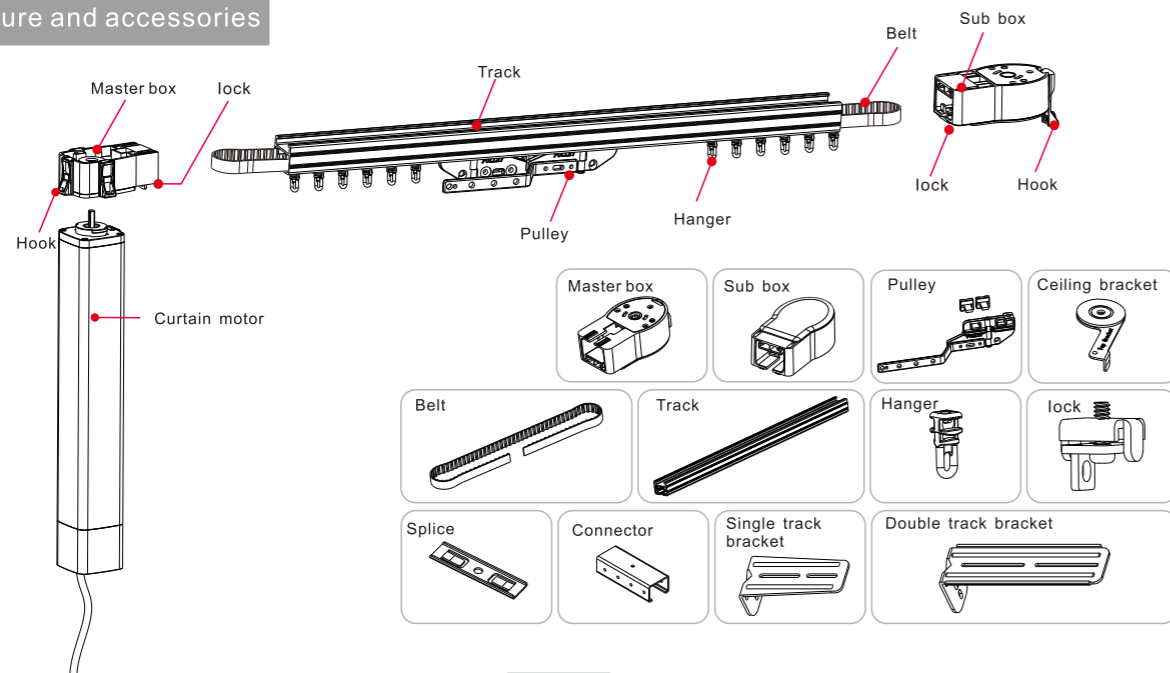
Parameters

Model No.	Rated torque	Speed	Housing size	Rated voltage	Rated power	IP level
AM50-1.2/100-EM-P	1.2N.m	12CM/S	295x50x50mm	100~240V AC 50/60Hz	40W	IP20

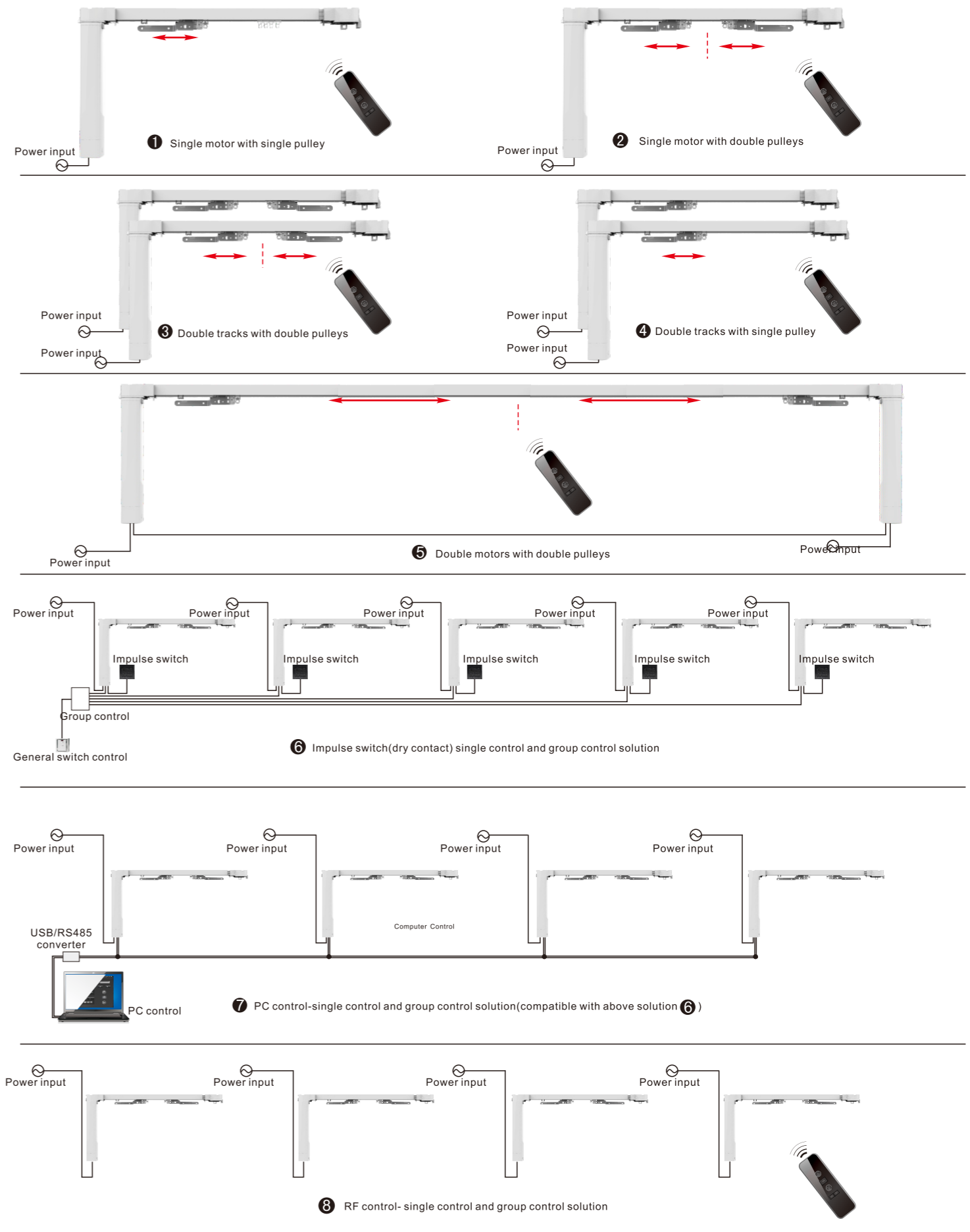
Loading diagram

Track length	Single motor with double pulley		Single motor with single pulley		Single motor with double pulley		Single motor with single pulley	
	R500	R500	R500	R500	R3000	R3000	R3000	R3000
4m	75kg	60kg	55kg	48kg	42kg	36kg	38kg	25kg
8m	65kg	55kg	50kg	42kg	36kg	30kg	25kg	20kg
12m	60kg	50kg	42kg	35kg	30kg	25kg		

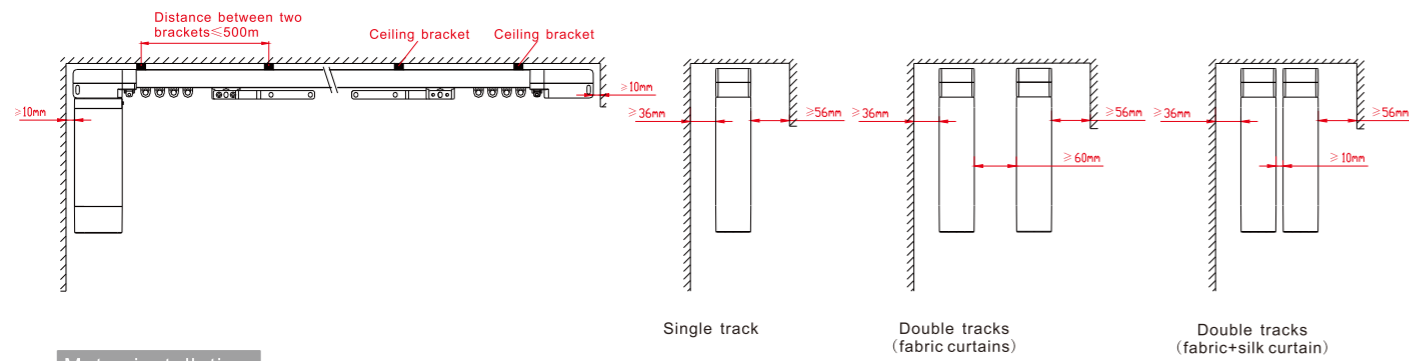
Structure and accessories



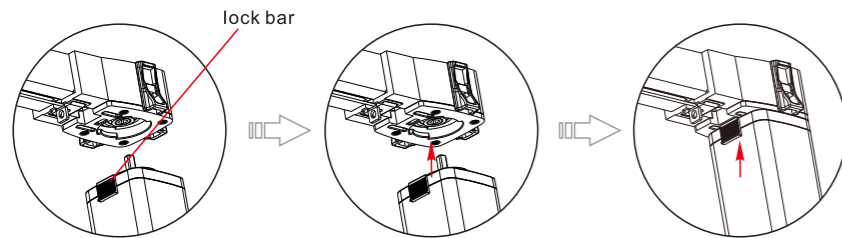
Solution



Installation

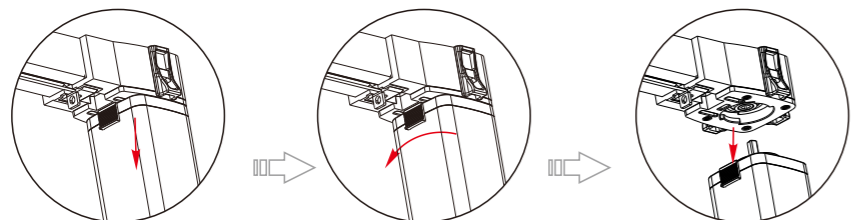


Motor installation



1. Please check the lock bar is in the correct position as shown in the image
2. Insert motor to master box
3. Slide the lock bar and make sure it is in the limit hole

Motor uninstallation

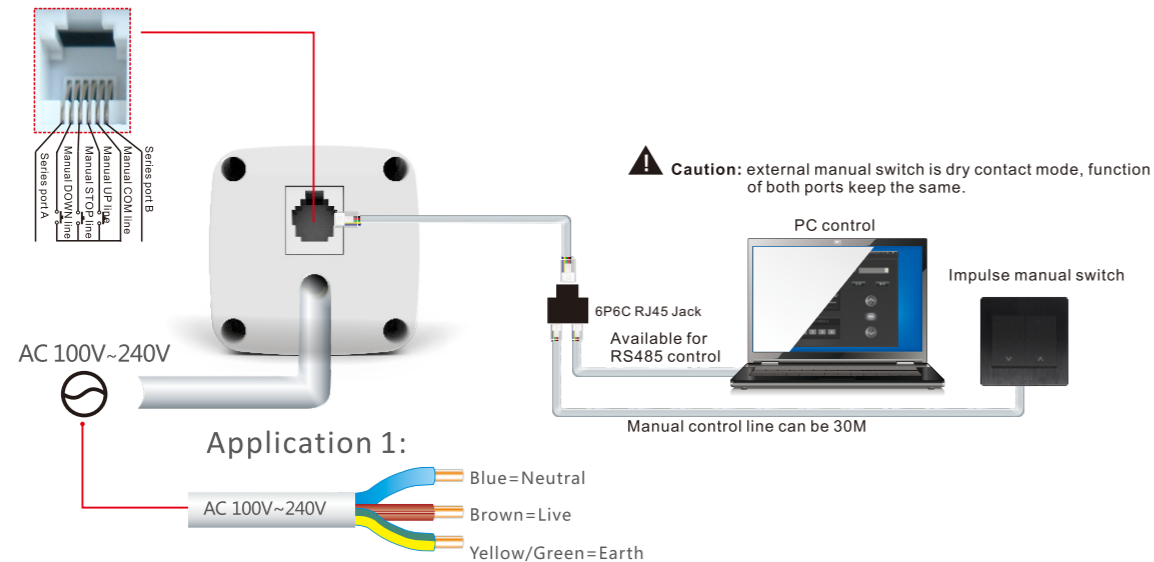


1. Pull the lock bar out of the limit hole
2. Slide the lock bar to the left
3. Remove the motor

Caution

- Please follow the above diagram for installation
- Make sure the lock bar in the position as shown in image
- Make sure the ceiling is strong enough to bear the total weight of track, motor and curtain

Wiring

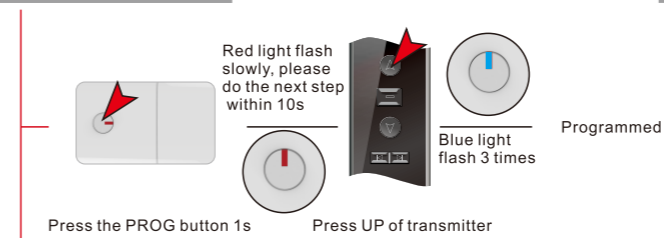


Dry contact, RS485 Control, Radio control

Operation instructions

Please select channel for multi-channel transmitter before operation
0.5s is needed for up/down converting, max single running time is 4 min

1 Programming



2 Changing direction

In the case of the motor goes in wrong direction



3 New transmitter adding



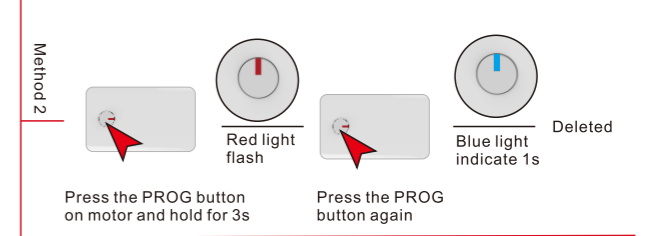
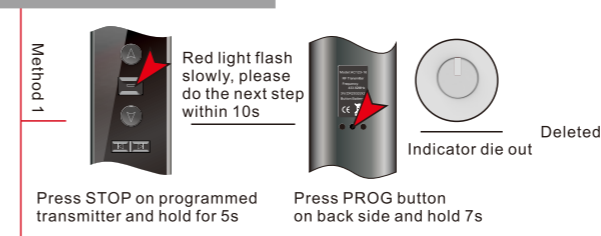
4 Single code deleting

If you are using multiple channel transmitter please select the channel first

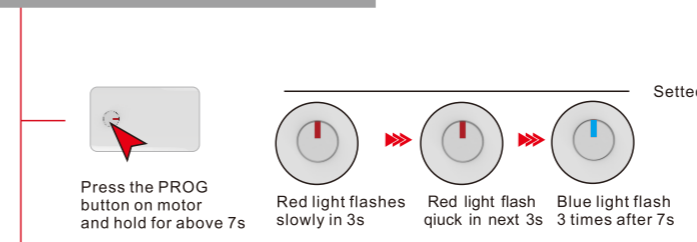


5 All code deleting

Journey will be deleted and the running direction will be the factory defaulted mode, keeping the touch function



6 Manual function setting



Trouble shooting

Problem	Analysis	Solution
Power on, but motor no reaction	Check the wiring is correct or not.	Please follow the wiring diagram to correct the connection.
Motor is working but the curtain don't move	Check the method of the track installation is right or not.	Please check and adjust the wheel gear and belt.
Motor work automatically	Motor paired by other transmitter.	Delete all remotes, programming again.
Can't pull curtain move by hand	1. power off suddenly when motor running 2. the hand pull position is wrong, resulting pulley stuck.	1. pull the curtains back wards, then pull it again. 2. hand pull position back 10 cm.