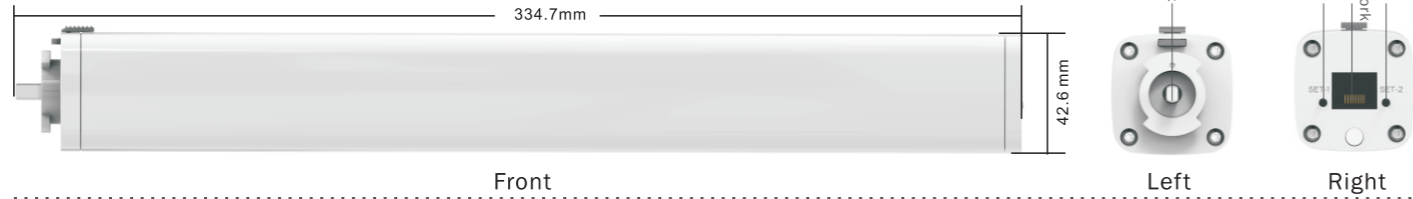


# HN89 curtain motor manual

Company reserves the right to change product design and specifications without prior notice then ,photos are for reference only. A/O H12103

## Product Introduction

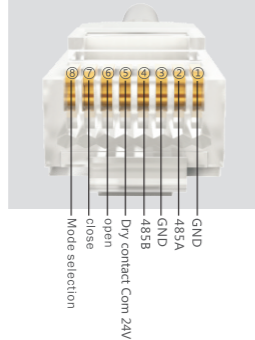
HN89 super silent curtain motor: nice appearance, small size with high torque, wide input voltage, suspended silent design, unique anti-jamming 868MHZ, super receiving distance and no external antenna, built-in WIFI / BLE function (optional), support full range of smart home voice control.



### Product parameter

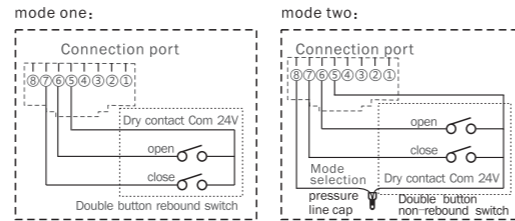
Input voltage (three wires): 100-240V~50/60Hz  
 Input voltage (five wires): 110V/ 220V~50/60Hz  
 Torque: 1.2N.m  
 Rated power: 36W

### Eight-core network cable interface



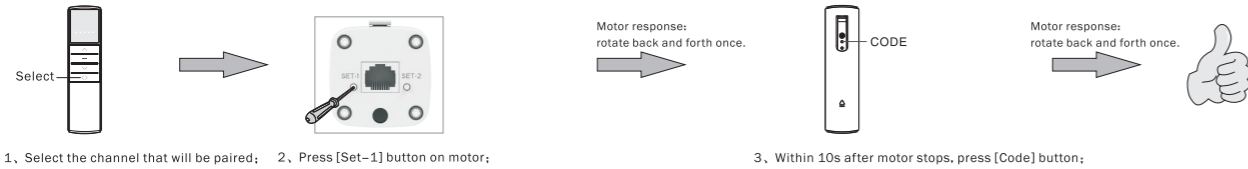
### Weak current switch mode selection

The default is mode one; The working mode of the switch is passive dry contact mode

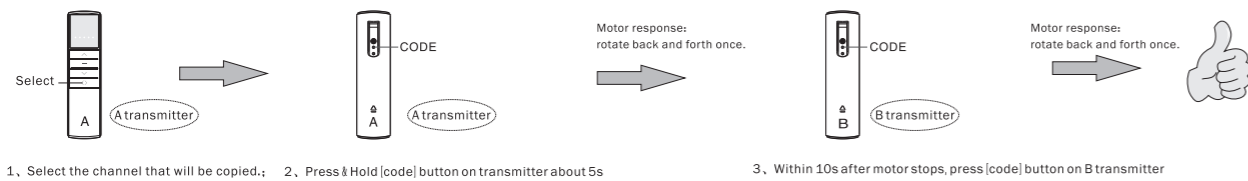


## Instructions: ( Take A10 button transmitter as an example, for other transmitters, please refer to the corresponding transmitter manual.)

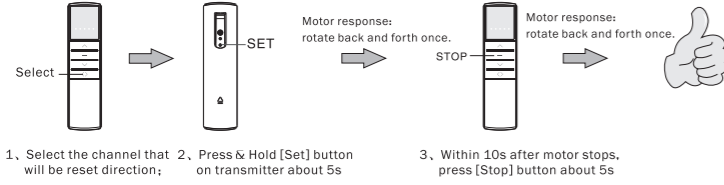
**Pairing transmitter and motor** repeat the pairing operation once to eliminate the current pairing, A motor stores up to 5 transmitter channels, adding a new transmitter channel will cover the earliest channel. For example, current paired channels are 1-5. If you add channel 6, paired channels will be 2-6.



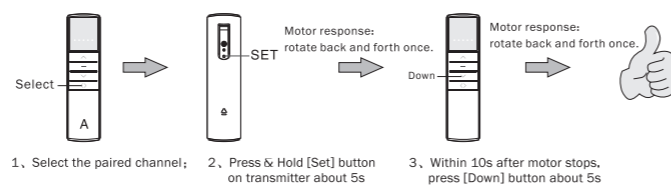
### copy add a new channel to control motor. (No need to touch motor)



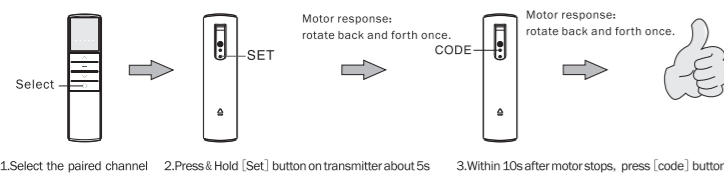
### Reset direction



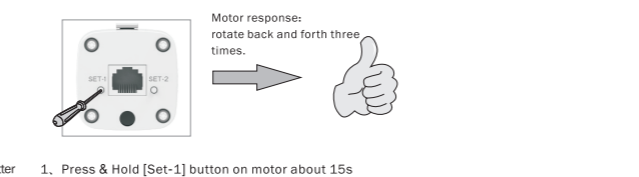
### Fabric rebound location exchange setting



### Cancel limit

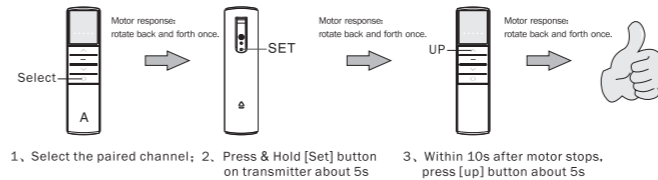


### Speed setting



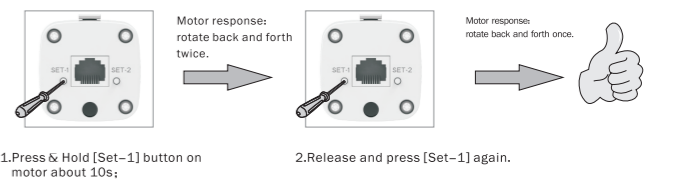
### Pull start function

The pull function is turned on by default



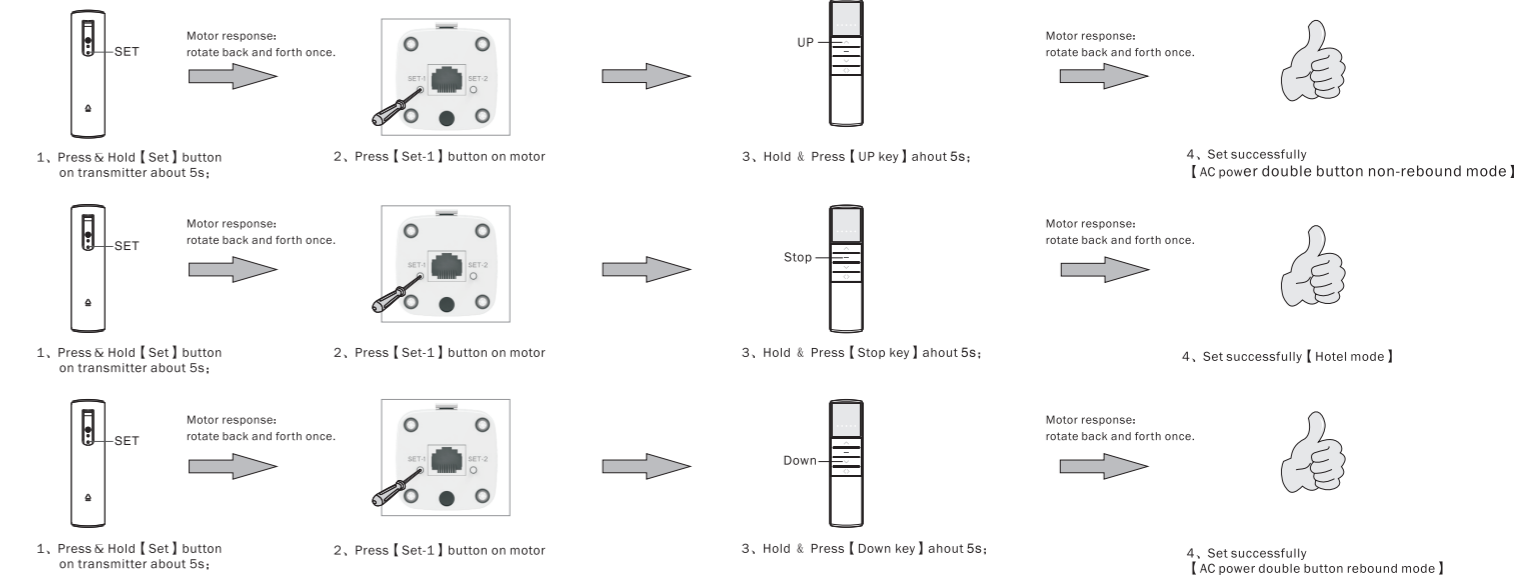
### Restore factory settings

clear all settings on the motor and restore to the default state



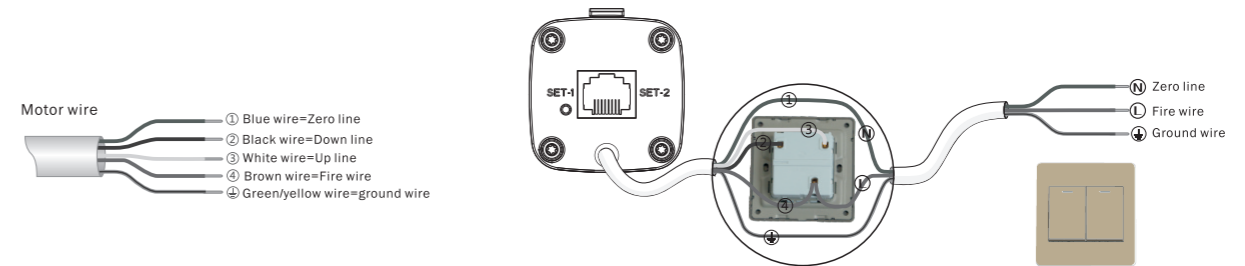
### AC power switch mode selection

The factory default is the first mode.

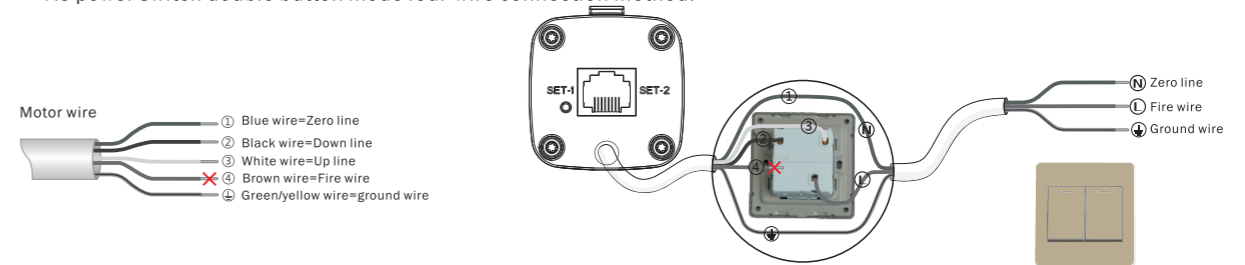


### AC power switch installation wiring diagram

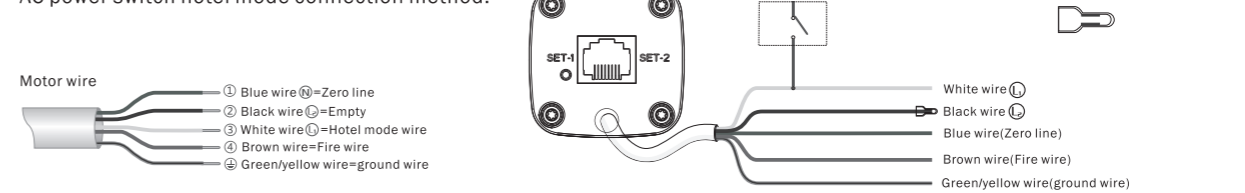
#### AC power switch double button mode five-wire connection method:



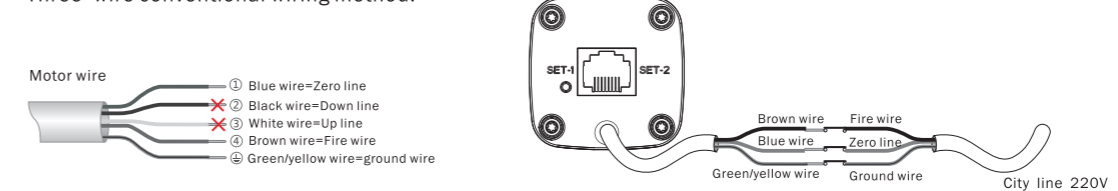
#### AC power switch double button mode four-wire connection method:



#### AC power switch hotel mode connection method:



#### Three-wire conventional wiring method:



- 1 Strong current control distance more than 60m, the need for special custom.
- 2 Zero line and Fire wire can not be reversed. If there is a spare line after wiring, please use pressure line cap to do well insulation.