

# IH80 AC Input Flexible Quiet WIFI Curtain Motor

## Features



- AC100-240V, wide voltage input for different voltage power area
- Light touch to start the motor by softly drag the curtain fabric, it will open or close the curtain automatically
- When the electricity off, it can be manually operated
- Soft start and soft stop, quiet and smooth running
- It takes the first open and close position as its stops, and keeps the small gaps of the pulleys and pulley and gearboxes to protect the parts clash.
- Various control way for application requirements

- **Flexible quiet design:** high-precision drive, leading intelligent design, beside, slow open and close make it light and smooth moving
- **Various control:** According to the application, with option of RF control, hard wire control etc
- **Remember limits:** Motor remember the first open and close stop, and keep no hit on the parts for longer life usage, even the power off and on again

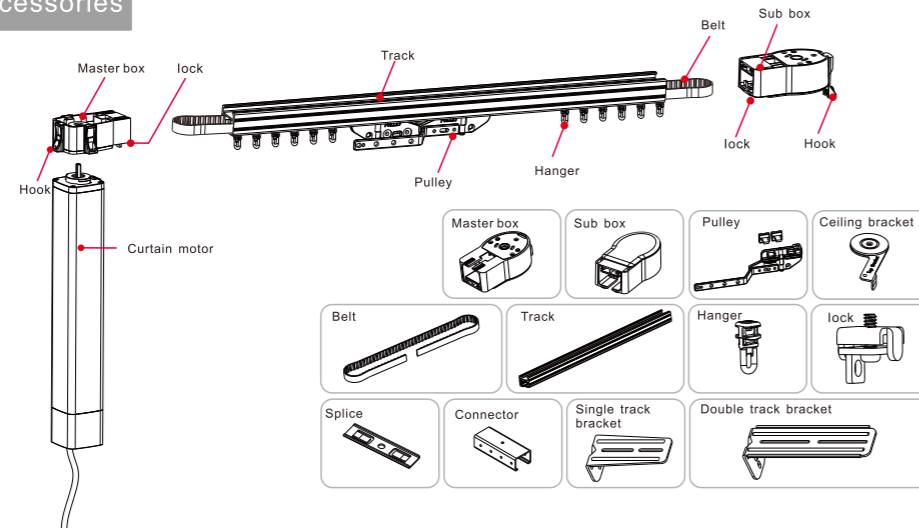
## Parameters

Model No.	Rated torque	Speed	Housing size	Rated voltage	Rated power	IP level
IH80 WIFI	1.2N·m	12CM/S	295x50x50mm	100~240V AC 50/60Hz	40W	IP20

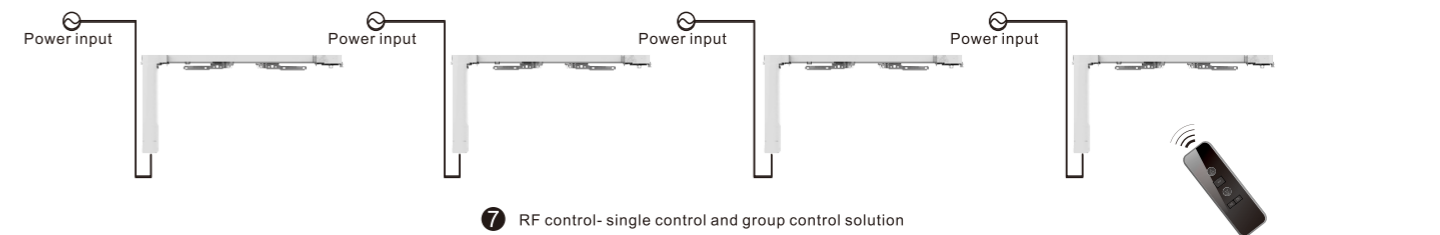
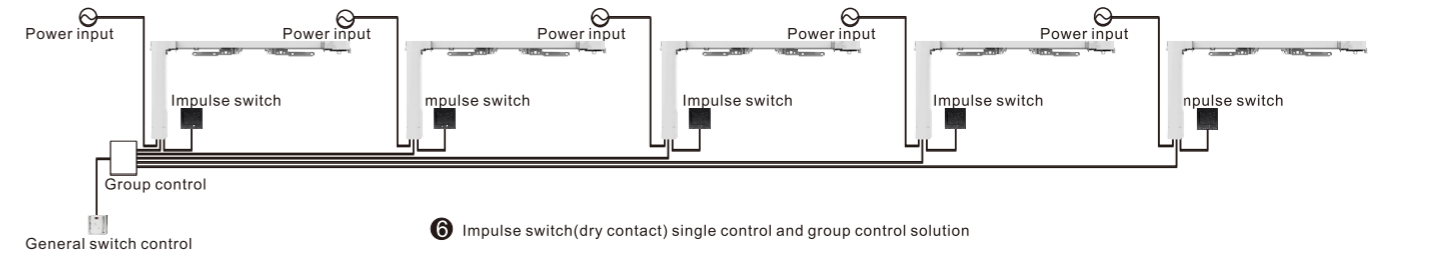
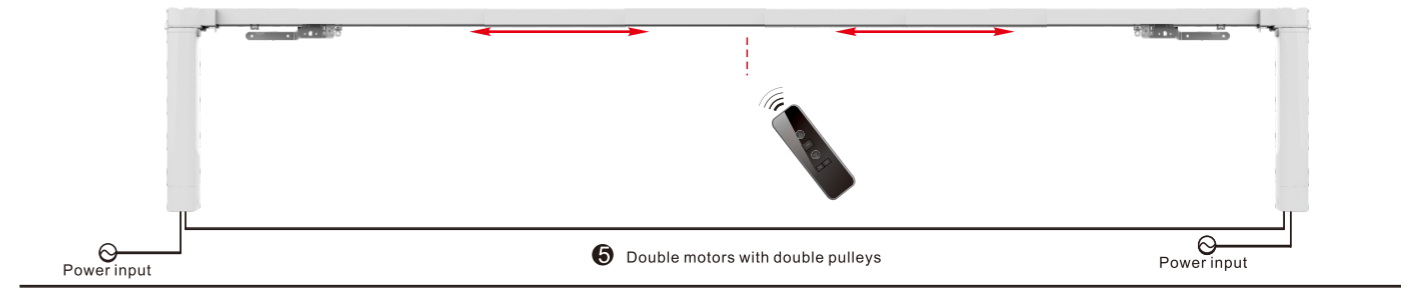
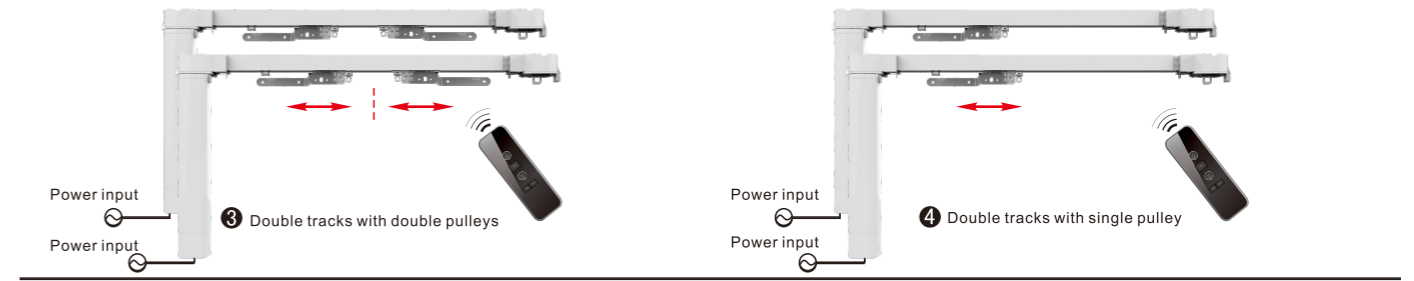
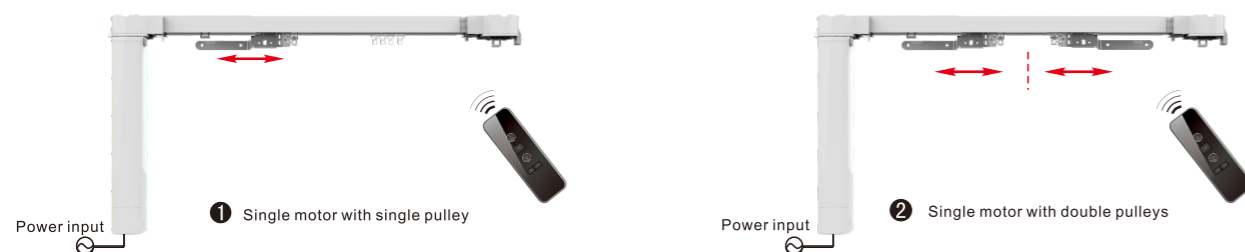
## Loading diagram

Track length	Single motor with double pulley		Single motor with single pulley		Single motor with double pulley		Single motor with single pulley	
	R500	R500	R500	R500	R3000	R3000	R3000	R3000
4m	75kg	60kg	55kg	48kg	42kg	36kg	38kg	25kg
8m	65kg	55kg	50kg	42kg	36kg	30kg	25kg	20kg
12m	60kg	50kg	42kg	35kg	30kg	25kg		

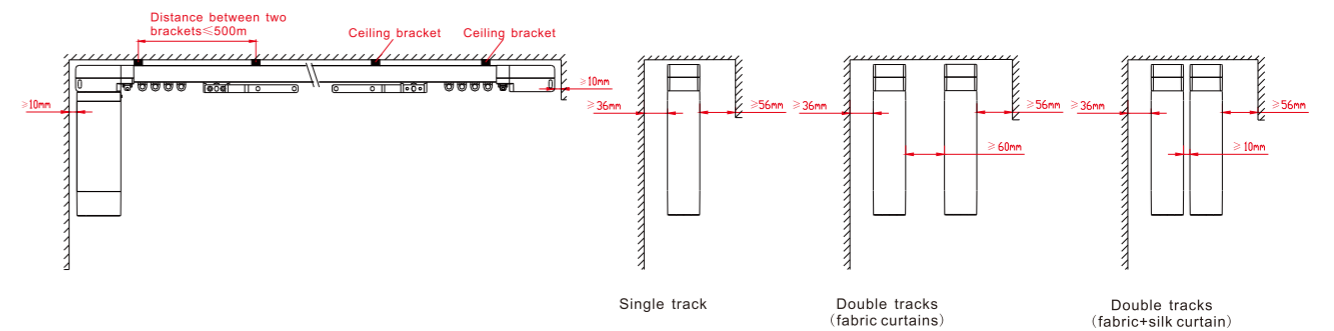
## Structure and accessories



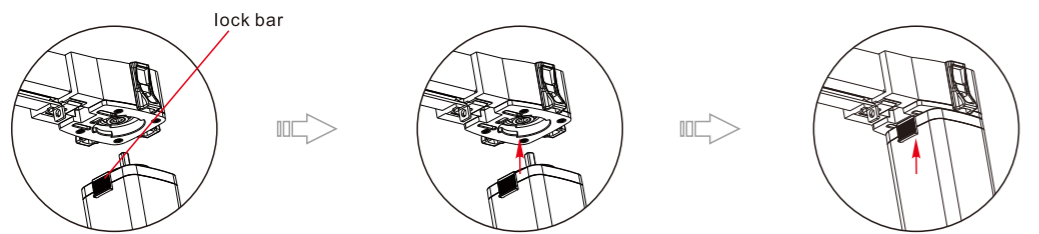
## Solution



## Installation

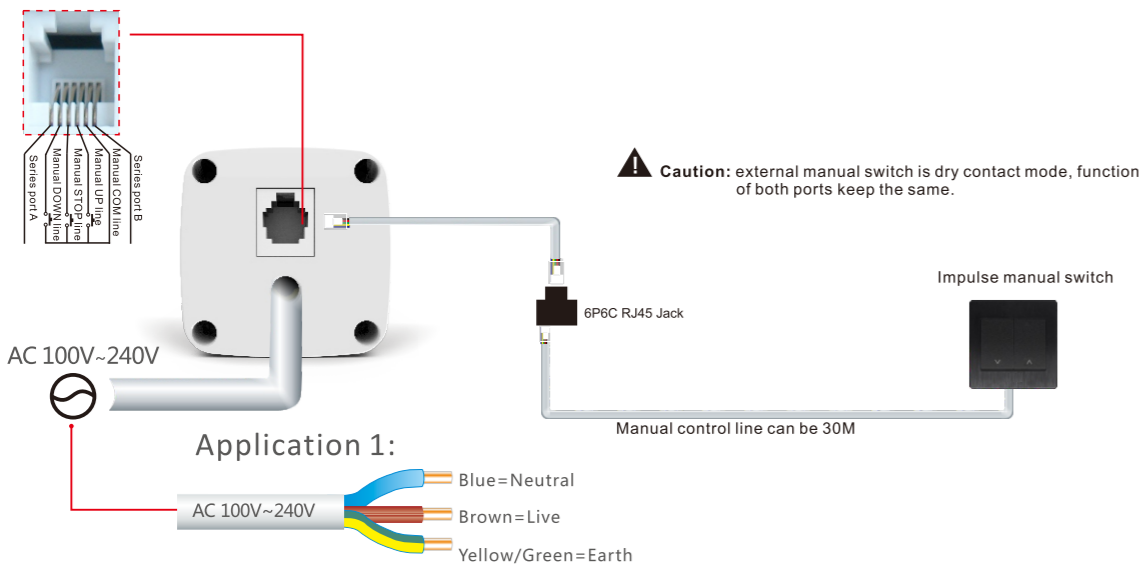


## Motor installation



1. Please check the lock bar is in the correct position as shown in the image
2. Insert motor to master box
3. Slide the lock bar and make sure it is in the limit hole

## Wiring

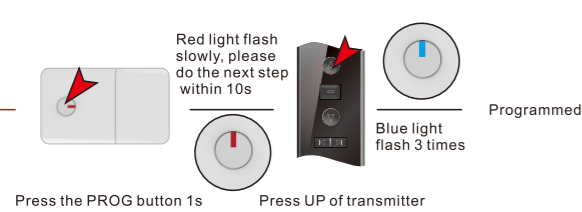


Dry contact, Radio control

## Operation instructions

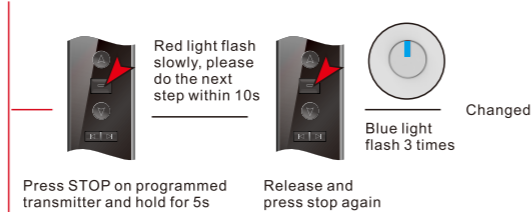
Please select channel for multi-channel transmitter before operation  
0.5s is needed for up/down converting, max single running time is 4 min

### 1 Programming

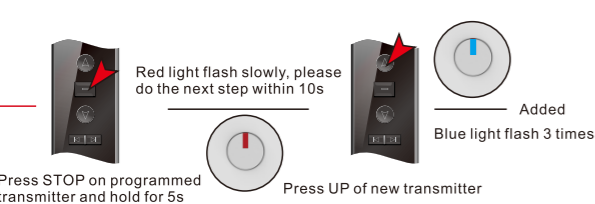


### 2 Changing direction

In the case of the motor goes in wrong direction



### 3 New transmitter adding



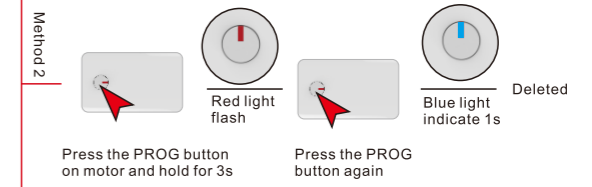
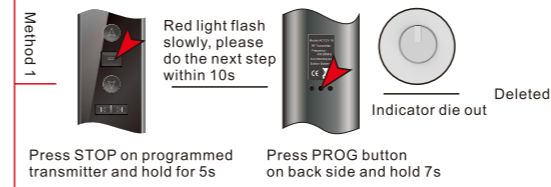
### 4 Single code deleting

If you are using multiple channel transmitter please select the channel first

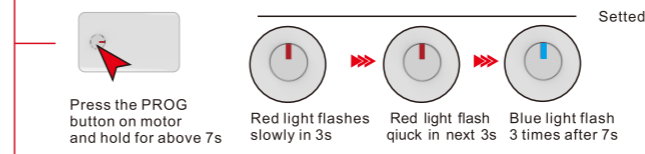


## 5 All code deleting

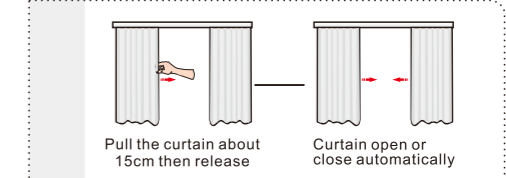
Journey will be deleted and the running direction will be the factory defaulted mode, keeping the touch function



## 6 Manual function setting



### Manual function demonstration



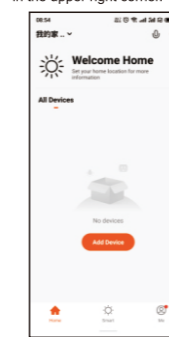
## APP Operation Instructions

1. APP download
2. Device binding

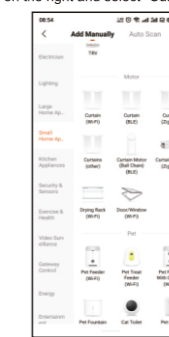


Scan the above QR code to download TUYA APP from APP shop

- 2.1. Match the device on the main interface of APP, and click "add device" or the "+" sign in the upper right corner.



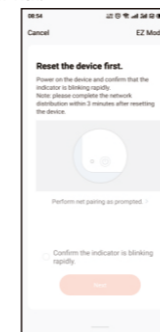
- 2.2. Click "Small Home Appliances" on the right and select "Curtain Wi-Fi".



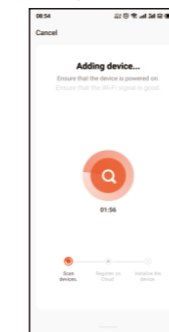
- 2.3 Select the WIFI bound by the device, enter the WIFI password, and click "Next".



- 2.4. Short press the motor PROG button 4 times (press time less than 1s), then long press one time (more than 3s), red and blue lights flashing alternately on the motor; then tick the words of "confirm the indicator is blinking rapidly", and click "Next"



- 2.5. Wait for the connection completed, (The blue light flashes 3 times, the WIFI connection is successful.)



- 2.6 After connection is completed, the name of the customized device can be modified. Click "Done".



## Trouble shooting

Problem	Analysis	Solution
Power on, but motor no reaction	Check the wiring is correct or not.	Please follow the wiring diagram to correct the connection.
Motor is working but the curtain don't move	Check the method of the track installation is right or not.	Please check and adjust the wheel gear and belt.
Motor work automatically	Motor paired by other transmitter.	Delete all remotes, programming again.
Can't pull curtain move by hand	1. power off suddenly when motor running 2. the hand pull position is wrong, resulting pulley stuck.	1. pull the curtains back wards, then pull it again. 2. hand pull position back 10 cm.